



# ASLAN GROUP



**SASA**  
EXCLUSIVE PARTNER - PET RESIN

**ASPET**  
PREFORM

**ASPET**  
RECYCLE

**ASPET**  
JAR



## HISTORY

**1987**

Aslan oil started its operations in Adana with the production of feed additive oil and packaging materials.

**2020**

The Aspet Organized Industrial Zone Preform Production Facility, equipped with the latest technology, became operational.

**1992**

Switched to citric acid production, expanding the product range, and reaching a current capacity of 7 tons/day.

**2021**

The Aspet Recycling Facility was commissioned in line with sustainability and circular economy goals.

**2005**

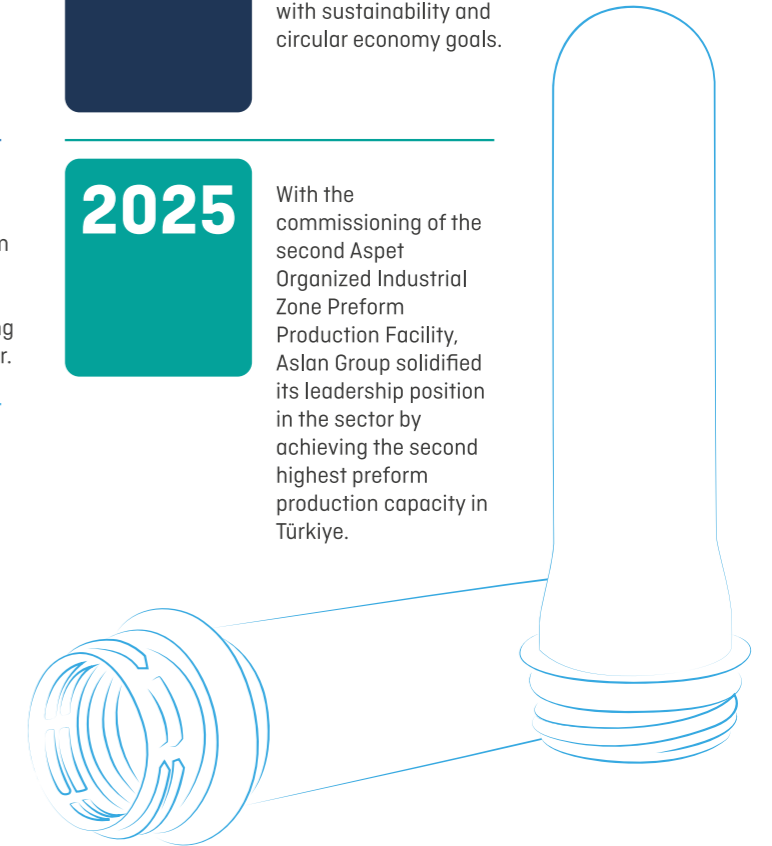
A strategic transformation was realized by shifting from edible oil production to PET jar and preform manufacturing, focusing on the packaging sector.

**2025**

With the commissioning of the second Aspet Organized Industrial Zone Preform Production Facility, Aslan Group solidified its leadership position in the sector by achieving the second highest preform production capacity in Türkiye.

**2012**

The Group entered the real estate sector by incorporating Aslanlı İnşaat (Construction).





**26** Export to Countries

**72.000** Tons  
Preform Production Capacity / Year

# QUALITY, TRUST and FUTURE

With a half-century of industrial production experience, Aslan Group is a strong production and supply center in the fields of plastics, packaging, recycling, and raw materials.

Our journey began in Adana in 1987 with the production of feed additives and oil packaging materials, continuing with the production of citric acid in 1992. In 2005, we made a strategic decision to shift towards the production of PET jars and preforms, marking a strong step in the packaging sector.

Our fields of activity expanded with the institutionalization of imports from Germany in 2012. In 2020, we commissioned our high-tech preform production facility in the Aslanlı Organized Industrial Zone. With our recycling plant investment in 2023, we reinforced our vision for sustainability and circular economy. By 2025, we will further increase our production capacity with the commissioning of our second Aspet OSB Preform Production Facility. Today, in our modern facilities covering 55,000 m<sup>2</sup> of closed area, we offer strategic solutions in PET preforms, jars, B caps, citric acid, recycling, and industrial raw materials. While proud to be among Turkey's top 1000 exporters, we increase our global market presence daily by exporting our products to 26 countries.

**55.000 m<sup>2</sup>**  
Modern Facility



# Our Sustainability and Environmental Policy

Aslan Group places the principle of sustainability at the core of our corporate strategy. We are executing comprehensive projects to reduce our environmental impact and leave a habitable world for future generations.



## Solar Energy Systems (SES)

With 2.87 MWp at our Tarsus factory and 1.2 MWp capacity solar panels at our Adana facility, we meet a significant portion of our energy needs. This investment allows us to reduce our annual carbon emissions by thousands of tons



## Wastewater Treatment System

Energy efficiency and water conservation are prioritized in our production processes. Our wastewater treatment systems minimize the environmental impact.



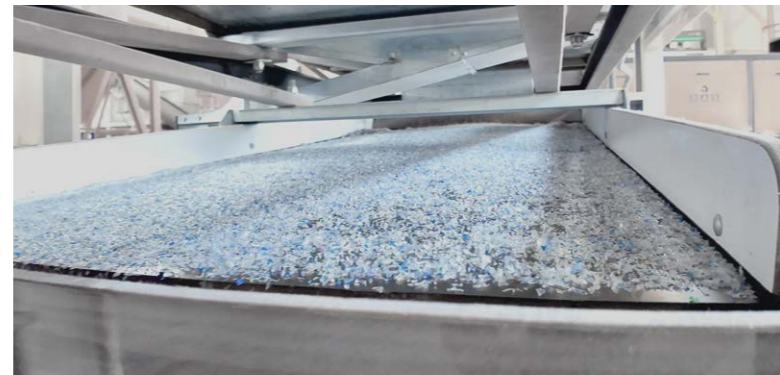
## Social Responsibility

We implement education and environmental projects for local communities and invest in the continuous development of our employees.



## PET Flake Recycling Facility

Our production of crushed clear/blue PET flake has reached 2250 tons per month. We contribute to the circular economy by converting PET waste back into raw material.



# Our Production Activities

Aslan Group serves various sectors with its multidisciplinary production structure. Each production line is managed by modern automation systems and quality control processes.



## PET PREFORM PRODUCTION

**10 Adet**  
**6 000**  
**72 000**

NETSTAL PET Line  
(4000/6000 Series)  
Tons/Month  
Tons/Year

Production of preforms in various neck types and weights for the food and beverage industry.



## JAR PREFORM PRODUCTION

Various jar preforms are produced for the cosmetic and food sectors, suitable for our blow molding line.



## CAP INJECTION

PET caps and custom designed caps with various size and color options.



## PET RECYCLING

*Product Group: Crushed Clear & Blue PET Flake*

High-quality flake raw material is obtained by recycling waste PET, supporting the circular economy.





# PET Preform Product Groups

With Aspet Preform, Aslan Group's strong brand, we manufacture high-quality preforms tailored to the needs of various sectors, utilizing 10 NETSTAL PET production lines (4000/6000 series), with a production capacity of 6,000 tons monthly and 72,000 tons annually.

## Water Preforms



Water Preforms					
Neck Type 1: 29/25					
Preform Weight	Palet Quantity (40HC Container)	Palet Quantity (Truck)	Preform Quantity (Per Pallet)	Total Quantity (40HC Container)	Total Quantity (Truck)
7,2 gr (+/-0,2 gr)	44	52	32.000	1.408.000	1.664.000
8,9 gr (+/-0,2 gr)	44	52	24.960	1.098.240	1.297.920
8,95 gr (+/-0,2 gr)	44	52	25.600	1.126.400	1.331.200
9,2 gr (+/-0,2 gr)	44	52	25.600	1.126.400	1.331.200
9,85 gr (+/-0,2 gr)	44	52	23.712	1.043.328	1.233.024
10,4 gr (+/-0,2 gr)	44	52	23.712	1.043.328	1.233.024
11,4 gr (+/-0,2 gr)	44	52	23.712	1.043.328	1.233.024
12,2 gr (+/-0,2 gr)	44	52	21.248	934.912	1.104.896
14 gr (+/-0,2 gr)	44	52	21.248	934.912	1.104.896
20,5 gr (+/-0,2 gr)	44	52	12.288	540.672	638.976
22 gr (+/-0,2 gr)	44	52	12.288	540.672	638.976
24 gr (+/-0,2 gr)	44	52	10.752	473.088	559.104
26,2 gr (+/-0,2 gr)	44	52	9.216	405.504	479.232
29,5 gr (+/-0,2 gr)	44	52	9.216	405.504	479.232
Neck Type 2: 38/33					
52 gr (+/-0,6 gr)	44	52	4.392	193.248	228.384
53,7 gr (+/-0,6 gr)	44	52	4.392	193.248	228.384
55 gr (+/-0,7 gr)	44	52	4.392	193.248	228.384
62,5 gr (+/-0,6 gr)	44	52	4032	177.408	209.664
73 gr (+/-0,6 gr)	44	52	3.672	161.568	190.944
Neck Type 2: 30/25					
21 gr (+/-0,6 gr)	44	52	15.936	701.184	828.672
Neck Type: 48/41					
112 gr (+/-0,6 gr)	44	52	2272	99.968	118.144
125 gr (+/-0,6 gr)	44	52	2048	90.112	106.496
130 gr (+/-0,6 gr)	44	52	2048	90.112	106.496

CSD					
Neck Type: 18/81					
Preform Weight	Palet Quantity (40HC Container)	Palet Quantity (Truck)	Preform Quantity (Per Pallet)	Total Quantity (40HC Container)	Total Quantity (Truck)
12 gr (+/-0,2 gr)	44	52	21.120	929.280	1.098.240
13 gr (+/-0,2 gr)	44	52	21.120	929.280	1.098.240
14,5 gr (+/-0,2 gr)	44	52	21.210	929.280	1.098.240
17 gr (+/-0,2 gr)	44	52	18.176	799.744	945.152
18 gr (+/-0,2 gr)	44	52	15.744	692.736	818.688
20 gr (+/-0,2 gr)	44	52	16.640	732.160	865.280
22 gr (+/-0,2 gr)	44	52	15.552	684.288	808.704
24 gr (+/-0,2 gr)	44	52	15.744	692.736	818.688
28,5 gr (+/-0,2 gr)	44	52	9.696	426.624	504.192
29 gr (+/-0,2 gr)	44	52	9.696	426.624	504.192
31,5 gr (+/-0,2 gr)	44	52	9.696	426.624	504.192
32 gr (+/-0,2 gr)	44	52	9.696	426.624	504.192
35 gr (+/-0,2 gr)	44	52	9.696	426.624	504.192
37 gr (+/-0,2 gr)	44	52	8.704	382.976	452.608
38 gr (+/-0,2 gr)	44	52	8.704	382.976	452.608
40 gr (+/-0,2 gr)	44	52	8.704	382.976	452.608
46 gr (+/-0,2 gr)	44	52	7.008	308.352	364.416
48 gr (+/-0,2 gr)	44	52	7.008	308.352	364.416

Oil Preform					
Neck Type: 29/21 (28mm)					
Preform Weight	Palet Quantity (40HC Container)	Palet Quantity (Truck)	Preform Quantity (Per Pallet)	Total Quantity (40HC Container)	Total Quantity (Truck)
21 gr (+/-0,2 gr)	44	52	13.184	580.096	685.568
26 gr (+/-0,2 gr)	44	52	11.904	523.776	619.008
47 gr (+/-0,5 gr)	44	52	7.680	337.920	399.360
81 gr (+/-0,2 gr)	44	52	2.848	125.312	148.096
90 gr (+/-0,5 gr)	44	52	2.848	125.312	148.096

# Product Portfolio

Aslan Group is not only a PET preform manufacturer but also has a strong supply network in the fields of textile, packaging, and industrial raw materials. Our Product Groups:

Textile Chips and Fiber POV and Yarn Varieties

Citric Acid

Polyethylene Raw Materials

Dyes and Color Additives

Packaging Materials

(Caps, laminated lids, separators, octabins, etc.)



## PET CHIPS

SASA PET BG-74

SASA PET BG-76

SASA PET BG-80

SASA PET BG-84

## TEKSTİL CHIPS

ADVANITE 18012 - SEMI-DULL

ADVANITE 19013 - SUPER BRIGHT

ADVANITE 19012 - SUPER BRIGHT

## POY

20025 CP10 FINAL 75D/72 SD ECRU NON-EVEN LENGTH

20025 CP10 FINAL 75D/72 SD ECRU

20028 CP10 FINAL 300D/96F SDB POY

20009 CP10 FINAL 100D/36F SD POY

20018 CP10 FINAL 150D/48F SD POY

20021 CP10 FINAL 300D/96F SD

20015 CP10 FINAL 150D/48F SDB

100D/36F SDB/20010 BLACK POY

CP10 FINAL 75D/36F SD/20006

CP10 FINAL 75D/36F SDB/20007

## CITRIC ACID

CITRIC ASID

## POLYETHYLENE PRODUCTS

PETILEN YY I457

## COLORANT PRODUCTS

HOLCO PET BLUE

HOLCO PET GREEN

YELLOW DYE

## FILAMENT

2X150D/48F YM TEX STD BYZ RND SZ FTF HIM/34005

300D/96F YM TEX STD BYZ RND S FTF NIM/34015

75D/36F YM TEX STD SYH RND S FTF NIM/33020

100/36 HIM Y.MAT EKRU IMG

150D/48F YM TE STD BYZ RND S FTF NIM 34008

## FILAMENT

150D/48F YM TE STD SYH RND S FTF NIM 33003

150D/48F YM TEX STD BYZ RND S FTF HIM/33006

100D/36F YM TEX STD BYZ RND S FTF HIM/33007

"TEKSTÜRİZE EKRU PES.PUNTASIZ 75/36 "

TEKSTÜRİZE EKRU PES.PUNTASIZ 150/48

33055 150D/96F YM TEX STD BYZ RND S FTF SIM

33018 100D/36F YM TEX STD BYZ RND S FTF NIM

33019 100D/36F YM TEX STD SYH RND S FTF NIM

75D/36F YM TEX STD BYZ RND S FTF NIM/33016

150D/48F YM TEX STD BYZ RND S FTF NIM / 33000

300D/96F YMTEX STD BYZ RND S FTF NIM/33002

34007 75D/36F YM TEX STD BYZ RND S FTF NIM

150D/48F YM TEX STD BYZ RND Z FTF NIM/34045

## COMMODITIES-IN TRANSIT

ACETIC ACID

## FILM CHIPS

ADVANITE 19009

## PACKAGING

120 MM SEPARATOR 3250

SILVER LAMINATED COVER

GOLD LAMINATED COVER

MESH CONTAINER 985\*1150\*1175 MM EG

CARDBOARD 1000X1200X1000MM OCTABIN BODY 7PLY

CARDBOARD 1000X1200X1000MM OCTABIN COVER 3 PLY

## FIBER

54008 CP8 ELY 1,2X38MMNW

54003 CP8 ELY 1,4X38MM TX

54001 CP8 ELY 1,2X32MM TX

54002 CP8 ELY 1,2X38MM TX

50339 1,6DTEX 38MM 031 BLACK FIBER

53001 ELY3 3,0 DEN 60 MM NW

54007 CP8ELY 1,2 DEN X 38MM MX TX FIBER

50339 CP12ELY 1,4 DEN X 38MMTX SYH

54023 3,0 DTEX 76 MM NONWOVENS

54004 CP8 ELY 1,4 DEN X 38 MM NW FIBER

54020 CP8 ELY 3,0 DEN X 60 MM NW

57002 CP7 ELY 1,5 DEN X 38 MM NW

57070 CP7 ELY 3,0 DEN X 76 MM NW

53036 ELY3 1,2 DEN X 38MM TX

1,6DTEX 38MM 031 ECRU 831

53030 1,2 DEN X 38MM OPTIC

50001 - CP1-2 ELY 1,4 DEN X 38 MM HT TX BLK

50461 CP3 ELY 1,2 DEN X 38 MM HT TX BLK FIBER

56000 7.8DTEX 64MM FIBER

54006 1.5DTEX 38MM NW

50018 1.2DENX38MM BLACK FIBER

54021 3.0DENX60MM ECRU NONWOVEN FIBER

3.0DENX60MM EKRU NONWOVEN- 2nd QUALITY FIBER

57061 CP7 ELY 3,0 DEN X 60 MM NW

54103 1,5 DEN 38 MM HT NW

1.4X38MM SPUNLACE 2nd QUALITY

6 DEN EKRU FF HOLLOW 56002

15 DEN EKRU FF HOLLOW 56008

7 DEN X 64 MM 56005 FIBER

57042 CP7 ELY 16 DEN X 60 MM FF

7,0 DEN X 64 MM HCS TIPI (1. QUALITY ) FIBER 56000

56007 15,0 DEN X 64 MM HCS TIPI (1.QUALITY ) FIBER

57007 CP7 ELY 1,5 DEN 51 MM NW

56020 6DENX64MM BEYAZ SOLID FF TIPI

54009 1,5DEN51MM NW

54203 CP8 ELY 1,4 DEN 38 MM NW HF

56001 CP8 BICO 7,0 DEN X 32 MM HCS

56015 CP8 BICO 7,0 DEN X 64 MM HCFR

CP1-2 ELY 1,5 DEN X 38 MM TX HF 93 BR/58066



# Logistics and Packaging Solutions

Our products are shipped on pallets specifically designed for optimal storage and transportation. Thanks to our 40HC Container and truck loading capacity, we ensure seamless delivery, even for your large-volume orders.



**Our Quality and Certificates**  
We manage our production and supply processes in compliance with international standards.



ISO 9001

Quality Management System



ISO 14001

Environmental Management System



ISO 22000

Food Safety Management System



ISO 45001

Occupational Health and Safety Management System



HALAL

Halal and Tayyib Certificate



Kosher Certificate





**ASLAN**  
GROUP

**SASA**  
EXCLUSIVE PARTNER - PET RESIN

**ASPET**  
PREFORM

**ASPET**  
RECYCLE

**ASPET**  
JAR

**PREFORM**

Sağlıklı Mahallesi, OSB Sokak  
1033 No: 6 Tarsus-Mersin/Türkiye

**RECYCLING**

Sarıhamzalı Mh. 47007 Sk. No: 48/A  
Seyhan-Adana/Türkiye

T: +90 322 445 28 28

T: +90 533 950 97 43

T: +90 532 654 32 32

info@aslangrup.com

sales@aslangrup.com

www.aslangrup.com

